



Emmanuel Catholic College

Whadjuk Boodjar, 122 Hammond Road, Success WA 6164
Telephone: 08 9414 4000 Email: admin@emmanuel.wa.edu.au
www.emmanuel.wa.edu.au

14 March 2022

Dear Parents and Guardians

To support our planning for your child's attendance, we have updated the process for COVID-19 absentees as per Catholic Education WA (CEWA).

This new process is effective immediately and overrules any previous system that the College has had in place.

Parents/Guardians must notify the College if your child:

- Tests positive for COVID-19 and must isolate for seven days.
- Is identified as a non-household close contact, is asymptomatic and will still be at school.
- Is identified as a non-household close contact, is symptomatic and will be isolating for seven days.
- Is identified as a household close contact and will be isolating for seven days.

CEWA have developed a [Self-Reporting Form](#) which is required to be completed to report the above to the College. The information will go directly to the Principal, prompting our COVID response. This form is also available on the College App/Links.

If your child falls into one of the above categories, please see the infographic below to determine what action must be taken.

Please do not underestimate the importance of informing the College of a positive COVID case through the [Self-Reporting Form](#). Your actions will ensure the risk to others is minimised and that we do our very best to limit the spread of the virus across our community.

As a Catholic school our priority is always the health, safety and wellbeing of our students and all members of our broader community. For more information on the very high caseload protocols visit:

<https://www.wa.gov.au/government/announcements/very-high-caseload-settings-introduced-western-australia>

If you have queries or concerns regarding your child, please contact the College.

If you have health concerns, please contact WA Health on 1300 316 555.

Kind regards

Mr Paul Watson
Principal

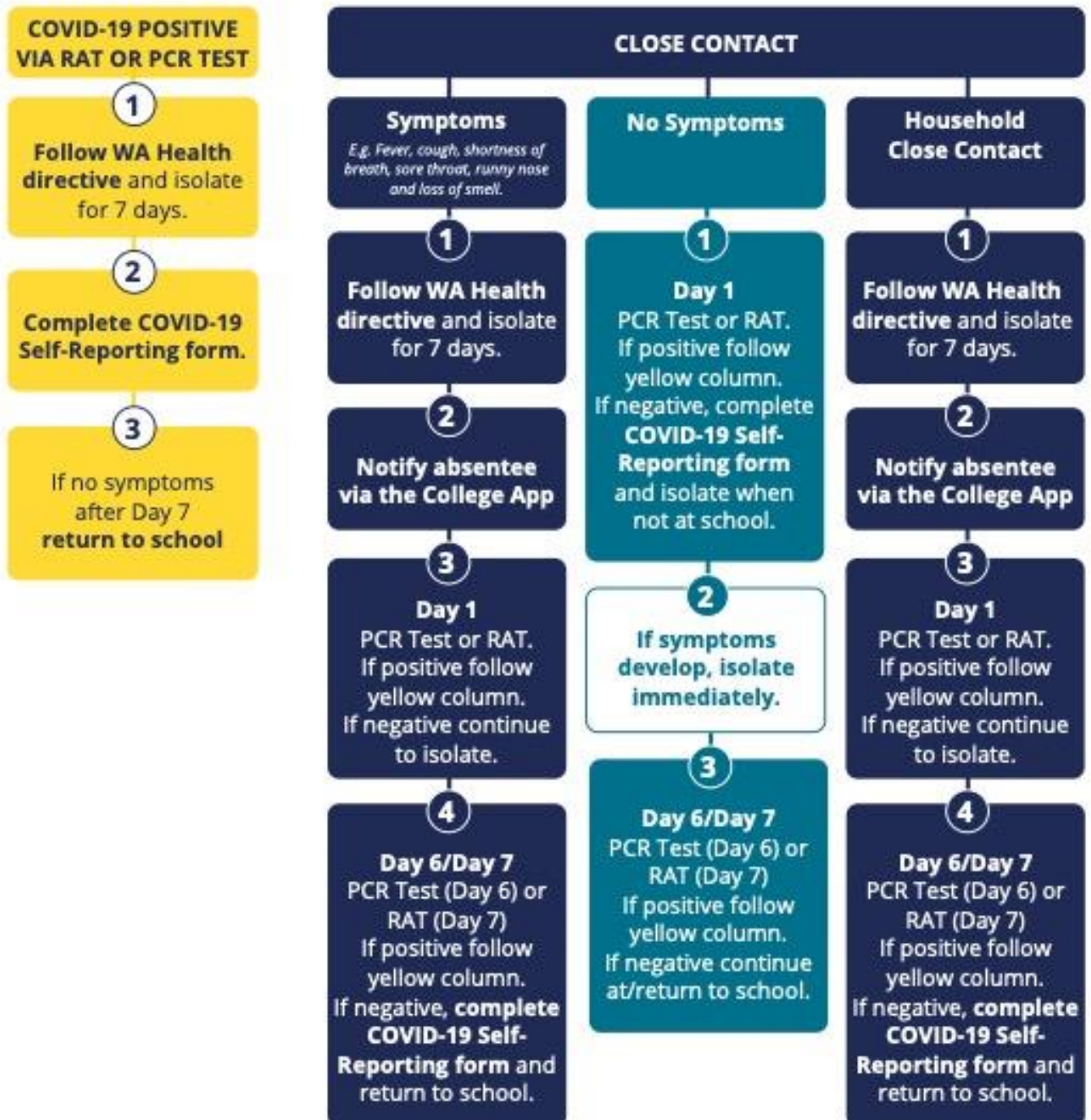


Students to follow mask protocols.

If a student feels unwell they should remain at home and normal absence procedures followed.

We strongly advise that students undertake a RAT or PCR Test if unwell.

COVID-19 positive or close contact?



For more COVID information call the COVID Hotline 13 26843

All positive RATs must be reported to WA Health via www.healthywa.wa.gov.au/ratregister