



SEQTA Engage App Guide

How to login to the SEQTA Engage App

1) Download the SEQTA Engage App



iPhone

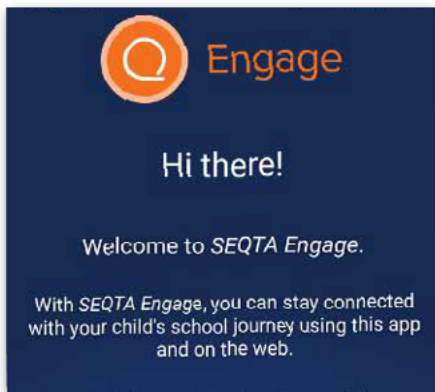


OR

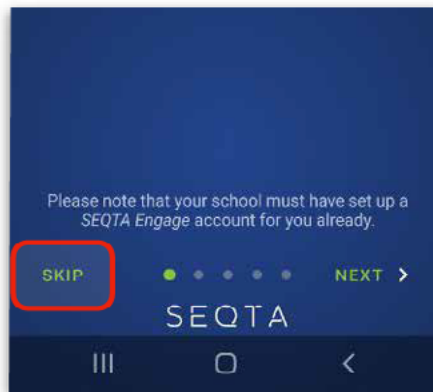
android



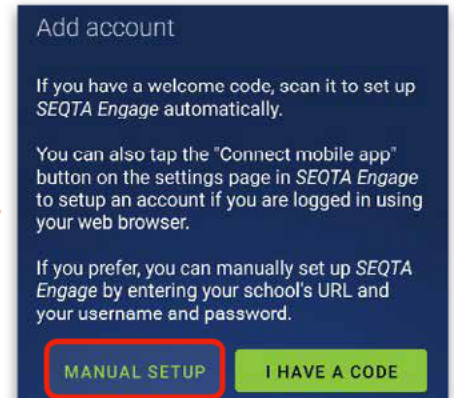
2) Open the App once it has been installed



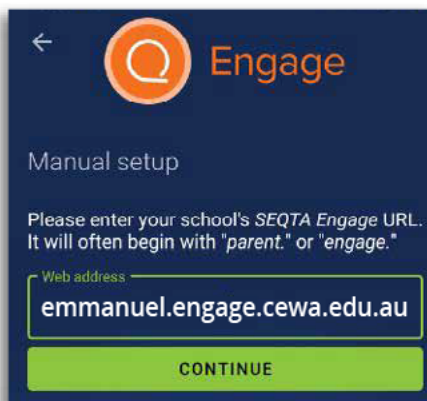
3) Click on the **SKIP** button in the bottom left corner



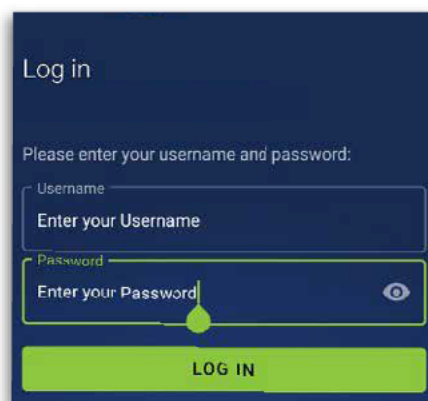
4) To add your account, click on **MANUAL SETUP**



5) Enter the URL:
emmanuel.engage.cewa.edu.au



6) Enter your credentials:
Username & Password



If you have any issues logging in
Please email IT Support

